

FOCUS

SCHENECTADY PHOTOGRAPHIC SOCIETY NEWS


Volume 79

September 2009

Number 1


2009 Kick-off Meeting to feature Tony Sweet on September 23

*The Schenectady Photographic Society
Presents:
Tony Sweet*



*Co-sponsored by Nikon
and The Fine Arts Dept. of Hudson
Valley Community College*

*7pm Wednesday Sept. 23rd
at The Bulmer Telecommunication Center of
Hudson Valley Community College, Route 4, Troy, NY
Free Admission*



Schenectady Photographic Society will kick-off the 2009/2010 year by featuring Tony Sweet, fine art nature photographer, workshop instructor, speaker, and author. After 20 years as a professional jazz drummer Tony turned to photography where he applies the improvisational, spontaneous, and abstract nature of jazz to the integral elements of nature photography.

Tony conducts Visual Artistry photography location workshops, and speaks to photography organizations throughout the continental United States and Canada. Tony's articles and images are featured in Shutterbug and Rangefinder magazines, and is a contributor to Nikonnet.com. He is a staff writer for Nikon World magazine.
Continued on page 3

Schenectady Photographic Society Focus



FOCUS goes fully electronic to enhance online member interaction

For most of you, this will be the last hard copy issue of FOCUS that you will receive in the mail. Starting October, hard copies of the FOCUS will only be mailed out to those members without email. We will send out an email with the link to the PDF copy of the FOCUS as soon as it is published. What will this mean for you members? For one thing, no more waiting for the post; you will be able to read the FOCUS almost as soon as it is published — you can even print it out if you choose or bask in satisfaction at the knowledge of the trees you just saved by not doing so. The copies will be archived on our website; so you always have access to them with a computer. The electronic copy will be in full color; so you can actually see color images in full color. You will also be able to follow links from the electronic copy to further resources on the web. Furthermore, the PDF Newsletter published each month will be just one component of the FOCUS, which will be mirrored on our blog at <http://schenectadypicturesociety.blogspot.com/> — here you can discuss the articles, read and post feedback, comments, suggestions, contribute your own ideas or discuss those of others (all comments are moderated). We hope these new features will enrich the FOCUS and enhance your reading and browsing experience.

You don't even have to wait to get your PDF copy! There are several ways you can follow the articles and comments as they are posted to the FOCUS blog. Near the top right of the blog, you will see the phrase "Subscribe To", followed by the icon; click on this icon to subscribe to posts and/or comments in your favorite feed reader or bookmark client. A little further down, you will see a list of "Followers"; click here to add yourself to the list of followers of this blog. It is that simple. Get started today!

Visit the new SPS member album on Flickr

All members are invited to join the Schenectady Photographic Society group on Flickr. To visit this group, click on or type this link into your web browser: <http://www.flickr.com/groups/schenectadypicturesociety/>

This group is for members of the Schenectady Photographic Society to post images of SPS social events and field trips. While membership is open by invitation only to all SPS members (if you have or open a Flickr account), images posted here can be viewed by anyone; so you can share your images with your friends and family.



Frank Bumbaratore
Plumbing
(518) 372-5038
(518) 852-2170
Licensed & Insured

Vitamins, Minerals & Herbal medications.
Best quality for your health with Da Vinci Labs through Dr. Jeff Perkins
www.albanypreventdoc.com

RESTORATIONS


MOTOPHOTO
The best place for pictures... guaranteed!!



Trust your prescription to a drugstore, trust your memories to MotoPhoto

- Free Index Print With every Roll
- Slide Processing
- Black & White Processing
- Enlargements
- Digital Film Processing

Photos on CD



Motophoto / Latham
Corner of Rt. 9 & Rt. 155
671 New Loudon Rd.
Latham NY 12110

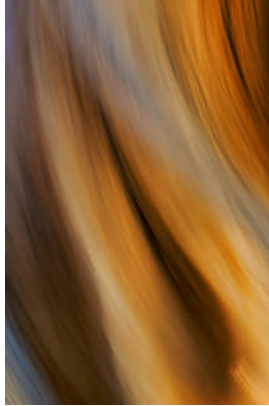
The Best Place For Pictures... Guaranteed!!

Schenectady Photographic Society Focus

Kick-off Speaker Tony Sweet *(Continued from page 1)*

Tony's fine art prints are exhibited in private and corporate collections throughout the United States, and he is represented by the Getty Picture Agency. His images are also used by Nikon, NikSoftware, Singh Ray, Microtek, and others for national ad campaigns.

He has authored four books on the art of photography: *Fine Art Nature Photography* ('02); *Fine Art Flower Photography* ('05); *Fine Art Nature Photography: Water, Ice, Fog* ('07); and *Fine Art Digital Nature Photography* ('09).



Tony was honored as a Nikon Legend Behind the Lens in 2006, member of Team Nik (NikSoftware) in 2007, and a Lensbaby Guru in 2008.

I first met Tony back in 2005 where I took his Acadia/Nova Scotia Visual Artistry photography workshop. Tony is one of the best workshop instructors I have ever had, who opened my eyes to photography, focusing me onto the details and artistry of photography. Tony has embraced photography and the changing world of photography to produce images of breath taking beauty and detail of the world around us. Plan on attending the SPS Kick-off meeting September 23rd at 7:00pm where Tony will share his insight and stir your photographic juices. In order to provide Tony with a suitable venue, we have moved this year's kick-off meeting to the auditorium in the Bulmer Telecommunications Center on the Hudson Valley Community Campus. Outfitted with state-of-the-art audio and visual equipment, comfortable seating and excellent sight lines, we're confident that you will enjoy this intriguing presentation.



We would also like to thank Nikon Camera for sponsoring Tony as our kick-off speaker for the 2009-2010 year.

Directions and a campus map are available at the following web pages:

Driving directions:

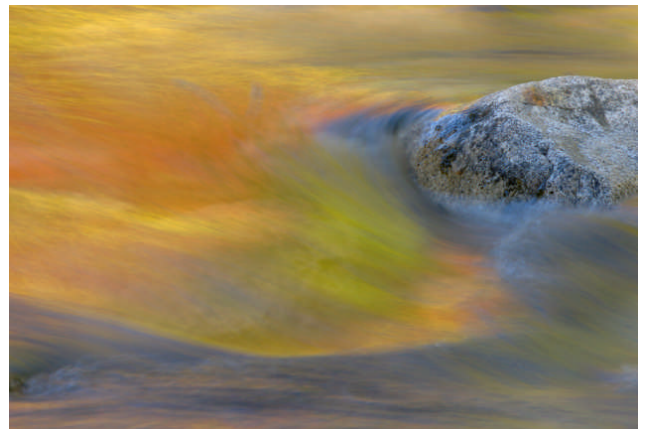
<https://www.hvcc.edu/campusmap/index.html>

Campus Map:

https://www.hvcc.edu/campusmap/campus_map.html

Handicapped parking is also available. For further information, please contact Robert Near, rjnear@rjnphoto.com or (518) 945-2637.

- Robert Near



Kick-off meeting with Tony Sweet
September 23rd at 7:00pm
at Bulmer Telecommunications Center
Hudson Valley Community College, Troy

Schenectady Photographic Society Focus

President's Welcome

– *Connie Frisbee Houde*

On behalf of the board, I would like to welcome you all to the Schenectady Photographic Society's 2009-2010 year full of photographic adventure. For some of you when you receive the quad-fold with the schedule of this year's activities you will notice there are some changes to our programs. After much deliberation and an informal poll of the membership we decided to address some of the points that have been raised in the past few years.

In general Print Night and Slide/Projected Image Night remain at the same time – the first and second week of each month. The format of these meetings will be different. They will begin as usual with announcements and will be followed by 15 to 20 minute presentations while the images are being judged for the competition. These presentations may include and are not limited to:

- a) the makers of the placing images from the previous competition discussing the process of creating the image, other images may be selected to be discussed as well
- b) a short "how to" presentation
- c) a question and answer period
- d) a panel on a particular topic

Please let the chairs for print night (Doug Mitchell and Sean Sullivan) and projected image night (Julie Palyswiat and Bob Gough) know what you would like to learn and/or see in these presentations.

Following these short presentations will be the "cookie break". After this social time, the competition judging will have been completed. The judge will then comment on each photograph entered. This will address the issue raised by a number of members, "I don't bother to enter any more because if I don't place I never have any feed back as to what might improve my images." Judges will be given suggested guidelines to assist them in being constructive with their comments.

The third Wednesday of the month will be Speaker Night. The entire evening will be devoted to a presentation allowing the speaker to not be rushed and have an adequate question and answer period. Our previous print and slide/projected image chairs were finding it more and more difficult to fill a total of 14 speaking slots through out the year. With the "gas crisis" more people were asking for an honorarium or travel expenses. Having fewer speakers may allow us to get sponsors to assist us in bringing individuals that we otherwise were not able to approach. I am pleased to announce that we have speakers that will be supported by Canon, Nikon, McGreevy ProLab, and Hunts.

Continued on page 6

Fall Field Trip to Millbrook Winery

– *Julie Palyswiat*

Fall is the perfect time of the year to enjoy and photographing fruits of the harvest. Our first field trip of the year has been scheduled for Saturday, October 3rd to beautiful Millbrook Winery. This New York winery has been called "the Hudson Valley's flagship winery" by The New York Times and is a gorgeous place to do some fall photography.

For this trip, we will need to arrange some car pooling and I will be looking for volunteer drivers. Millbrook is about an hour and a half south of Albany on the Taconic State Parkway. The area is surrounded by smaller vineyards, rolling hills, and lots of rural beauty.

The plan is to arrive at the vineyard about noon. There is a small picnic area where we can have a packed lunch, which needs to be brought from home. On previous visits, I have purchased a bottle of wine in their gift shop and enjoyed it with some cheese, fruit and crackers. Following Lunch, we can stroll around photograph the area until 2 pm. That is when our group is scheduled for a tour and wine tasting. You will be able to keep your souvenir glass so be prepared to transport it home safely. The cost of the tour and tasting is \$7.50 per person. I will be collecting the money at our meetings and then paying the vineyard with one check per their request.

Following the tour and tasting we will be free to roam the grounds and photograph to our hearts content. We will be there at a time when we will be able to photograph ripe fruit on the vine, harvesting and pressing of the grapes until they close at 6pm.

There is no limit to how many we have in our group, so I really do hope to see many of you there.

Mail Order Hours: Mon-Thurs 8AM-7PM, Fri & Sat 8AM-4:30PM

h Hunt's Est. 1889
Photo & Video
100 Main Street - Melrose, MA 02176 781-662-8822 FAX 781-662-6524
The Pro's Source!

Make Hunt's Your Source for 1,000's Of Different Films, From Slide Film, Print Film, Black & White Film, & Infrared Film, All From Leading Manufacturers! - We Carry Over 100,000 Different Items, Making Us One Of The Largest Photographic Warehouses In The Country! - Hunt's Can Satisfy All Of Your Needs For Photographic Equipment, Video & Digital Needs! - No Item Too Large or Too Small!

For Camera Club Incentives & Specials.

CALL: 800-924-8682

Schenectady Photographic Society Focus

Print Competition Rules 2009-2010

The purpose of the competition is to provide a venue for showing prints. The competitive element exists to add interest, and these rules are intended to provide order in the competition and simplify the process of handling prints. Judging is inherently subjective and does not yield a definitive evaluation of the merits of individual images.

1. Monthly Competition October – April

- Only dues-paid members in good standing may enter.
- There are three categories for each competition:
 - **Monochrome** – Images consisting of one color. Uniformly toned images are acceptable in the monochrome category.
 - **Color** – including partially toned and hand-colored images.
 - **Assigned topic** – negatives or digital files must have been captured after announcement of topics on May 1, 2009.
- Each maker may enter a total of **three prints each month**
- No more than **ONE** print may be entered in any one category. The requirement of entering one image in monochrome has been discontinued as of the 2009-2010 season.
- Prints must be 5x7” or larger. An exception will be made where the process is not conducive to enlargement (eg: Polaroid, contact prints, etc.)
- Prints must be mounted on mat board or foam core. (Over mats are optional).
- Mounts must be a minimum of 8x10” and may not exceed 16x20” with exception of panoramic images, which may not exceed the following mount sizes: 10x26”, 11x25” or 12x24” (mount height plus width cannot exceed 36”).
- Colored mounts/mats and multiple over mats are not allowed. Mounts and mats must be white or black.
- Prints in frames are not allowed.
- Prints requiring special handling are not allowed.
- Any Print Chair may disqualify prints that in his or her sole judgment might present risk of physical harm to other prints.
- Signed prints are not allowed.
- Prints must be submitted to the registrars on the night of competition. Prints will not be accepted after 7:30pm.
- Each submitted print must have a tag on the back of the mount, in the upper left corner, indicating the maker’s name, title (if any), category, and month of entry.
- The digital image, negative, or slide from which the print was made must be the work of the maker.
- Printing and mounting may be done commercially.
- Prints that “place” may not be re-entered in a subsequent monthly competition.
- Prints may not be entered more than two times.

2. Judging and Scoring

- An impartial judge will evaluate each print for impact, composition, technical execution, and presentation.
- The judging of the assigned topic category will include the additional factor of how well the image responds to the assignment.
- Prints will be displayed on racks under normal room lighting for judging. The arrangement of prints on the display racks will be at the discretion of the print stewards.
- The judge will not be given titles at the time of judging.
- Judges will be asked to comment on prints that “place”, and if time allows, on other prints that deserve discussion. This discussion is intended to help members and visitors discern the strengths and weaknesses that the judges see in the prints.
- For the purpose of the Printmaker of the Year awards, prints that place in competition will be awarded points as follows:
 - First Place 10 points
 - Second Place 7 points
 - Third Place 4 points
 - Fourth Place 3 points
 - Fifth Place 2 points
 - Honorable Mention 1 point
- If the number of entries is limited, the Print Chair may, at his sole discretion, eliminate one or more of the “places” for that month.

3. Year End Competitions

- **Print of the Year**
 - Separate Monochrome and Color Print competitions will be held at the May meeting.
 - Only prints that have been entered into a monthly competition during the 2009-2010 season of Schenectady Photographic Society may be entered into the Print of the Year Competition(s).
 - Entries must bear the original entry card on the back of the mount.
 - Presentation and entry rules are the same as for the monthly competitions.
 - Each maker may submit up to **ONE** entry in each of the Print of the Year categories.
- **Printmaker of the Year**
 - Recognition for Printmaker of the Year, Second Place Printmaker of the Year, and Third Place Printmaker of the Year will be awarded in the three categories of Monochrome, Color and Assigned Topic.
 - Award selection will be based on total points accumulated during the October – April monthly competitions of the respective categories.
 - In case of a tie, the person with the most first place scores will be judged the winner. If first place scores are tied, then second place scores will be included, etc. until a clear winner emerges.

Continued on page 6

Schenectady Photographic Society Focus

Print Competition Rules 2009-2010

[Continued from page 5]

Please note that there have been three major changes for the 2009-2010 season:

- Only ONE image per category each month;
- The requirement to enter in the monochrome category has been abolished;
- And for Print of the Year competition, only ONE entry per category.

These changes were made to give everyone a fairer chance at having their images selected and reduce the workload on our volunteer judges. With these changes, it is also hoped that there will be more opportunity for comment and critique of other prints entered in the competition.

PHOTO ESSAY RULES

A photo essay is a collection of images that are placed in a specific order to tell the progression of events, emotions, and concepts. Photo essays often address a certain issue or attempt to capture the character of places and events.

There are two categories:

Print Essay

A print essay is a series of still images (at least two) presented in some sequential manner. Images may be mounted on a flat board, laid in a box, bound into a book or other creative manner. Text may be interspersed with the images at the discretion of the maker.

Slide/Digital Essay

A slide or digital essay is a series of images presented in a sequential manner by the use of slide projectors or a computer.

Print and Slide/Digital Essay Guidelines

1. One entry per person in each category.
2. Participants are encouraged to use only their own images. Other images may be used only if they are vital to the narrative quality of the essay. Any images not the participants, must be credited. No more than 10% of the total photographs may be non-participant images.
3. Maximum length of a slide/digital essay is 8 minutes
4. It is the participants responsibility to know these rules and if they are not followed your essay will not be accepted.

President's Welcome [Continued from page 4]

The last week of the month will be for mentoring and fine art meetings. Mentoring nights will also include photo essay and digital methods – so have no fear we have not lost digital mentoring. It has become such an integral part of photography that the board felt it was no longer necessary to separate it out into a separate evening and it will be incorporated into all of the programs.

We on the board are excited about what we have set up for the 2009-2010 year and hope that you will join us on this new adventure. Remember that the board is here to help you, as a photographer, find what you are looking for at the Schenectady Photographic Society. We do look to you, the members, for ideas and feedback as we move through the New Year.

On a personal note as president I will not be present at the club for the month of October. I have an opportunity to return to Afghanistan, which as many of you know, has become a large part of my photographic focus. Other board members will be opening the meetings for that time and taking us through the beginning of this New Year.

Fragomeni

Insurance

584-4200

Home Auto Life Business

Digital Imaging Services by Jim Craner

- Large Format Inkjet Printing
- High Resolution Scanning
- Photoshop and Lightroom Tutoring
- Color Management Consulting
- Print Mounting, Matting and Framing

65 Bentley Drive, Troy, New York 12182
518.235.2754 or 518.526.2253

Schenectady Photographic Society Focus

Projected Image Competition Rules 2009-2010

1. Monthly Competition October -April

- Current member of SPS (dues paid)
- Put a dark colored dot at bottom left corner of slide as normally viewed.
Put your name and title of slide on same side as dot.
Do not use gummed labels that require moistening as they may come off and jam the projector. Pressure sensitive labels may be used
- Complete a 3x5 card (available on night of competition) with the required information. Submit both slide and card when registering for competition
- Maker may enter up to 4 images.
- Number of **slides** allowed each month - **Two**
Maker may enter One slide in general and one in assigned or two in either assigned or general.
- Directions for entering **digital images** will be in the *Focus* and on the web site.
- Number of **digital images** allowed each month - **Two**
Maker may enter one in general and one in assigned or two in either assigned or general.
- Slides
Slides must be an original 35mm B&W or color slide, not a manipulation.
- Digital images
Alternative processes or manipulations are allowed in creating an image. Every element of such an image must be an original creation by the maker.
- Assigned Topic
Must have been taken after May 1, 2009.
Must meet the assigned topic.
- Entry Time
Projected Image group night of each month between 7:00 p.m. and 7:30 p.m.
No slides will be accepted after 7:30 p.m.

2. Judging

- Impact
Interesting subject, subjects which fill the frame, strong colors, texture.
- Composition
Strong center of interest, leading lines, framing, vertical/horizontal format, perspective, graphic elements, rule of thirds.
- Technical Quality
Focus, exposure, lighting, tonal range;
Image surface free of scratches, dust and fingerprints.

3. Scoring

First place	7 points
Second place	5 points
Third place	4 points
Fourth place	3 points
Fifth place	2 points
Honorable mention	1 point

If the number of entries is limited, the Slide chair may, at his/her sole discretion, eliminate one or more of the places for that month.

4. Year End Competition and Awards

- Slide of the Year / Digital Image of the Year
The slides or digital images must have been entered in competition between October 2009 and April 2010 (regardless of score received)
Two slides / two digital images may be entered for Slide of the Year and Digital Image of the year competitions
- Assigned Slide/Digital Image maker of the Year
Award points will be based on total points accumulated during the October 2009-April 2010 monthly competitions.
- Slidemaker / Digital Image maker of the Year
Award points will be based on total points accumulated during the October 2009 - April 2010 monthly competitions.
- Ties
In the event of a tie in any of the categories, the person with the most first place scores will be judged the winner. If first place scores are tied, then second place scores will be used, etc. until a clear winner emerges.

Schenectady Photographic Society is a member of the Photographic Society of America



Member News... Congratulations!

Ken Deitcher published in Photo District News, July ("Australian Tree Frog").

Bob Riccardo has an exhibit in the Niskayuna Library for the month of September.



Schenectady Photographic Society Focus



2009-2010 Board of Directors

President

Connie F. Houde lilyconnie@verizon.net

Vice President

Linda Wroble 372-0091
Robert Near rjnear@rjnphoto.com

Treasurer

Pat McCormick suemcc_2000@yahoo.com

Recording Secretary

Dale Winsor dalehope8@yahoo.com

Corresponding Secretary

Bob Riccardo 767-2193

Directors at Large

Ray Henrikson rhenriks@nycap.rr.com
Kevin Sarsfield KSarsfie@nycap.rr.com

Speaker Coordinator

Robert Near rjnear@rjnphoto.com

Newsletter Editor

N. Sukumar
editor@schenectadyphotographicsociety.com

Annual Report Editor

Ruby Gold rubygold@verizon.net

Print Co-Chairs

Sean Sullivan sps@spsphotography.com
Doug Mitchell dougmitchellphotos@nycap.rr.com

Assistants

Adrian Kivort 399-2950
Bob Warner 377-3831

Projected Imaging Co-Chairs

Julie Palyswiat
slide@schenectadyphotographicsociety.com
Bob Gough
webmaster@schenectadyphotographicsociety.com

PhotoEssay Co-Chairs

Connie Frisbee Houde lilyconnie@verizon.net
Jim Craner renarc@aol.com

Mentoring Co-Chairs

Jeff Perkins perkster46@yahoo.com
Frank Bumbardatore A2EEOS@aol.com

Fine Arts Chair

N. Sukumar
editor@schenectadyphotographicsociety.com

Membership Co-Chairs

Luba Ricket lubashot@aol.com
Cynthia Placek cynthiaplacek@gmail.com

Publicity

Cynthia Placek cynthiaplacek@gmail.com

Grab Bag Coordinator

Howie Johannessen chj@capital.net

Web Master

Bob Gough
webmaster@schenectadyphotographicsociety.com

Refreshment Coordinators

Judy Breslau jbreslau@courts.state.ny.us
John Ogden jogden@capital.net

Church Coordinator

Don Krauter 399-1869

Schenectady Photographic Society

Bob Riccardo
108 Maple Ave.
Selkirk, NY 12158

Web Address:

www.schenectadyphotographicsociety.com

Blog: schenectadyphotographicsociety.blogspot.com

Member photo album:

www.flickr.com/groups/schenectadyphotographicsociety

©Schenectady Photographic Society and its contributors. The contents of the newsletter are copyrighted. No material herein may be reproduced in any manner without the written permission of the Editor or the material's specific contributor.

September - October Calendar

Wednesday, September 23 – Kick-Off meeting: Tony Sweet

Wednesday, September 30 – New member Orientation

Saturday, October 3 – Field Trip to Milbrook Winery

Wednesday, October 7 – Print group:

Assigned topic: **Interior**

Interesting interior of building

Wednesday, October 14 – Projected Image group:

Assigned topic: **Summer**

The beauties or typical activities of summer

(for digitally projected images AND slides)

Wednesday, October 21 * Speaker: Linda J. Ford

A Field Guide to the Wildflowers of Mexico's Copper Canyon

*Board meeting at 6:30 p.m.

Wednesday, October 28: Mentoring with Ken Deitcher

The *Focus* is published ten times a year by the Schenectady Photographic Society. The organization meets each Wednesday at 7:30 p.m. from October through May to promote and present informative programs, activities and competitions in the photographic arts for photographers throughout the Capital District. Members range from novice to expert. SPS meets at the First United Methodist Church, 603 State Street, Schenectady, New York. Parking and entrances are on Chapel Street, a one way street off Nott Terrace. Guests are welcome at all regular meetings. Annual dues are \$40.00 for individuals and families. The *Focus* newsletter is included in the membership dues. **If you change your email or mailing address, let Bob Riccardo know at briccardo@verizon.net**