

# FOCUS

SCHENECTADY PHOTOGRAPHIC SOCIETY NEWS

Volume 81

May 2012

Number 9

## Pick Pete's Brain on May 9<sup>th</sup>

by Peter Harris

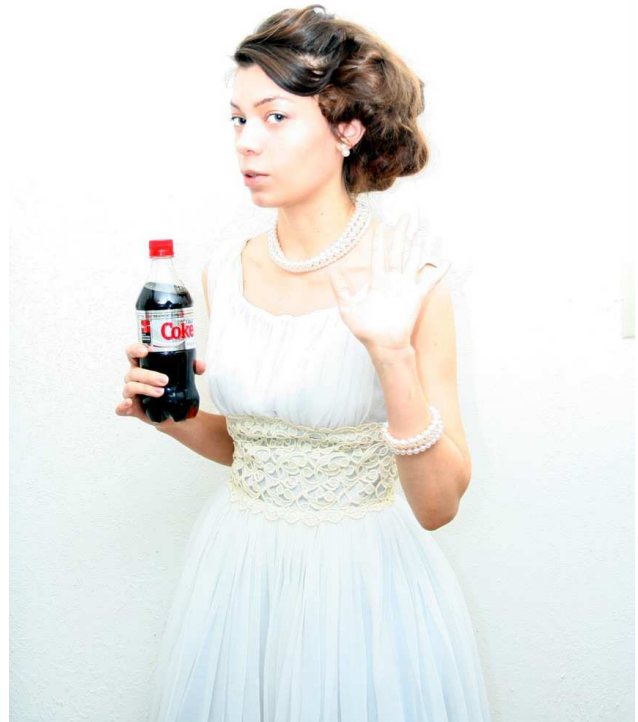
Peter Harris will detail some of the inventions or modifications from his time in photography, and host a discussion on the melding of old and new technologies to achieve unique analog and digital photographs. There will be time allowed for the postulation of photographic adaptation, and equipment adjustment or assembly. Examples of modified cameras and photos from similar ones will be on-hand.

*BIO: Having spent his entire life taking things apart, with nary a concern about putting them back together, Peter Harris found some comfort in photography.*

*[Continued on page 2]*



May-June Calendar		
Date	Competition	Program
Wed. May 2	Print of the year; <i>Photo Travel</i> <i>Interclub judging at 6:30 pm</i>	<b>Tony Sweet videos:</b> "Print Workflow" & "Early Portfolio Examples"
Wed. May 9	Projected image of the year; <i>Board Meeting at 6:30 pm</i>	<b>Peter Harris: Pick Pete's Brain</b>
Wed. June 6	<b>Annual meeting and awards banquet</b> Riverstone Manor	



### Pick Pete's Brain

*[Continued from page 1]*

With over 100 years of artistic and technological improvements, photography was the perfect solution for his perpetual creative itch. He is entirely self-taught, learning from others and trial-by-error. Ever-curious about the way things work, repair and modification was the next logical step. A respect and obsession with Polaroids has led to a number of pet projects not-yet-complete, and an Etsy store featuring rehabilitated pack-film cameras. The decline of brick-and-mortar camera stores forced an exit after eight years in photo retail, and Peter now lives near Portsmouth, NH with his marvelous girlfriend and ridiculous cat, and makes hi-tech beanbag chairs.

---

### NEW MEMBER CONSULTATIONS

As a 50+ year member of SPS I would like to help our Newer members who are having trouble visualizing their photos and modifying them for competition. I would like to work with and critique the newer members who need help in submitting the appropriate image to be judged.

To start, you can forward an image that you have selected for submission, along with your thoughts for why this was a good selection for competition and what you expect the judge to see. I will then correct and suggest improvements. The rest will be up to you. I will be available for internet and/or phone consultation, if desired.

This will be an experimental program to see how many new members avail themselves of this project. If it works well I may expand the idea. I would like to show your images that have been corrected (before and after), to all members in the monthly FOCUS.

Contact Ken Deitcher: [kendeitch@aol.com](mailto:kendeitch@aol.com), 518-489-7678.

**www.framedestination.com**  
**1-877-5FRAMES**

**FRAME DESTINATION**

Your Source for Fine Art Photography Picture Frames

- Complete Wood Frame Kits
- Complete Metal Frame Kits
- Ready Made Frames
- Matt Board
- Mount Board
- Acrylic & Glass
- Archival Photo Storage Boxes
- Crystal Clear Bags
- Photo Corners
- Tape/Tissue
- Frame Corners

13x19 FDI Frame  
Price: \$ 19.52

13x19 FDI Picture Frame Black comes with a Backing and Glass

Archival Photo Storage Boxes

VISA MasterCard DISCOVER

**Vitamins, Minerals & Herbal medications.**  
**Best quality for your health with Da Vinci Labs through Dr. Jeff Perkins**  
**[www.albanypreventdoc.com](http://www.albanypreventdoc.com)**

## Schenectady Photographic Society Annual Banquet

Wednesday June 6<sup>th</sup> @ 6:00 PM

River Stone Manor

1437 Amsterdam Road  
Glenville, NY 12302

Easily accessible from NYS Thruway exit 26

\$33 per person

Banquet tickets are available.

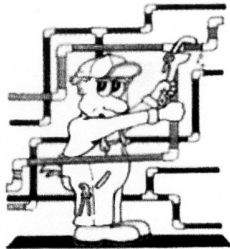
Tickets available till June 1st!

We have some great raffle items available!

Tickets or Questions? Kim Koza 393-2943  
[kkoza@silhouetteimages.com](mailto:kkoza@silhouetteimages.com)

Directions:

<http://www.riverstonemanor.com/contact.html>



**Frank Bumbardatore**

**Plumbing & Heating**  
**(518) 372-5038**

*Licensed & Insured*

### Digital Imaging Services by Jim Craner

- Large Format Inkjet Printing
- High Resolution Scanning
- Photoshop and Lightroom Tutoring
- Color Management Consulting
- Print Mounting, Matting and Framing

65 Bentley Drive, Troy, New York 12182  
518.235.2754 or 518.526.2253



**KELLER WILLIAMS**  
REALTY  
SARATOGA SPRINGS  
**Kathleen Callinan**  
Licensed Real Estate Salesperson

Bus: (518) 871-9417  
Cell: (518) 258-8578  
Fax: (518) 584-9959  
Email: [kcallinan@kw.com](mailto:kcallinan@kw.com)  
38 High Rock Ave. • Saratoga Springs NY 12866  
Each Keller Williams Realty Office is Independently Owned and Operated

## Innerwood Gallery

Picture Framing  
by  
Gayle Bennett

*"Where your treasured art is  
creatively enhanced and  
carefully protected for your  
enjoyment for years to come."*

**399-8504**  
1021 Saratoga Rd./ Rte. 50  
Ballston Lake, NY 12019  
[innerframer@yahoo.com](mailto:innerframer@yahoo.com)  
[www.innerwoodgallery.com](http://www.innerwoodgallery.com)





PHOTO & VIDEO EST. 1889

# Hunt's

---

**Call**  
**800-924-8682**  
**Ext. 2332**  
**ask for**  
**Gary Farber**

Schenectady Photographic Society  
 is a member of the  
 Photographic Society of America



**FOR OUR VERY LATEST**

## HOT SPECIALS

Visit our website at  
[huntsphotoandvideo.com](http://huntsphotoandvideo.com)  
 and sign-up to receive Hunt's eMail Specials

**5 REASONS**

**TO BUY FROM HUNT'S**

1. COMPETITIVE PRICING
2. PERSONALIZED SERVICE
3. FAST SHIPPING
4. WE SHIP TO YOUR DESTINATION
5. SAME DAY SHIPPING UNTIL 3PM ET

# Fragomeni

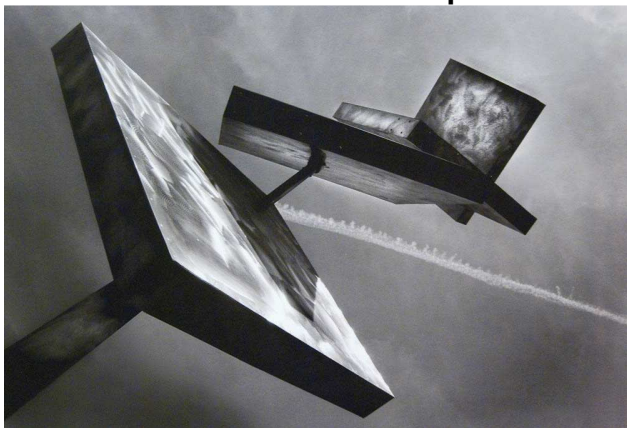
## Insurance

**584-4200**

**Home   Auto   Life   Business**



### April Print Competition Winners



Rebekah Sokol secured 1<sup>st</sup> place in *Monochrome* for **Abstraction and Vapor Trail** (above), photographed in downtown Albany in natural morning light with a Canon Rebel XTi and Tamron 18-250 lens.



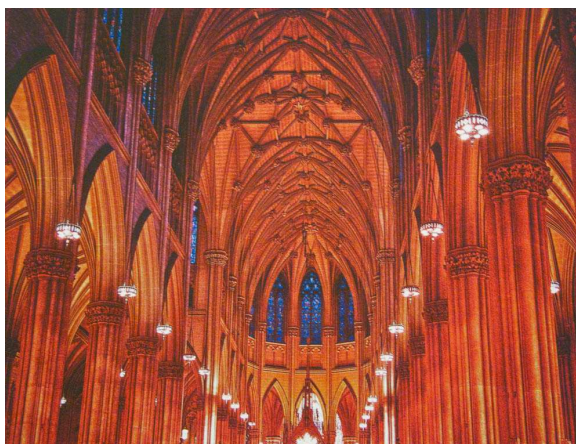
Luba Ricket bagged 1<sup>st</sup> place in *Assigned* for **Big & Burly** (above), photographed with her iPhone at Albany Airport under overhead spotlights, 1/17 sec. @ f/2.8; ISO: 80. When at the airport, Luba always checks out the Gallery. The exhibit was titled LOL, Art that is seriously funny. She took one image, then her nephew added his ukelele for scale and took two more shots.



Abandoned (2<sup>nd</sup> place *General*, above) by Jack Hurley; Mega Photo Shoot (2<sup>nd</sup> place *Assigned*, below) by Ken Deitcher.



More Laundry (3<sup>rd</sup> place *Monochrome*, above) by Kim Koza; St. Patrick's Cathedral (3<sup>rd</sup> place *General*, below) by Jim Miller.

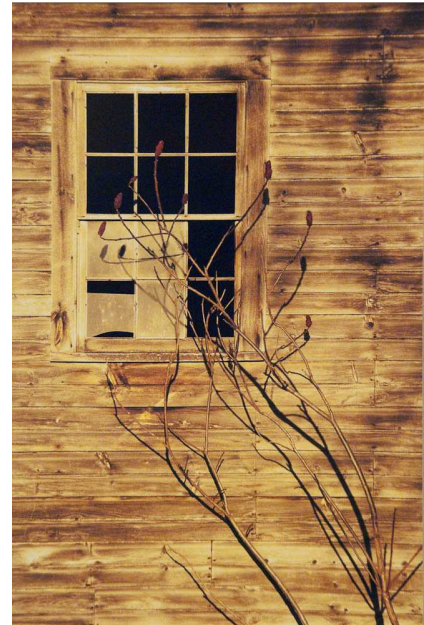




### April Competition Winners



**Joe After Doctor Visit** (1<sup>st</sup> place Smartphone, above) by **Fran Giordano**; **View From My Windshield** (2<sup>nd</sup> Place Smartphone, below) by **Soumita Sarkar**.



**Barn Window** (1<sup>st</sup> place General print, above) by **Phil Hammond**; **The Photographer** (3<sup>rd</sup> Place Smartphone, below) by **Fran Giordano**.



**Frontier Scout** (2<sup>nd</sup> place Monochrome print, far left) by **Max Tiller**; **Hi There Big Guy** (3<sup>rd</sup> place Assigned print, at left) by **Barb Lawton**.





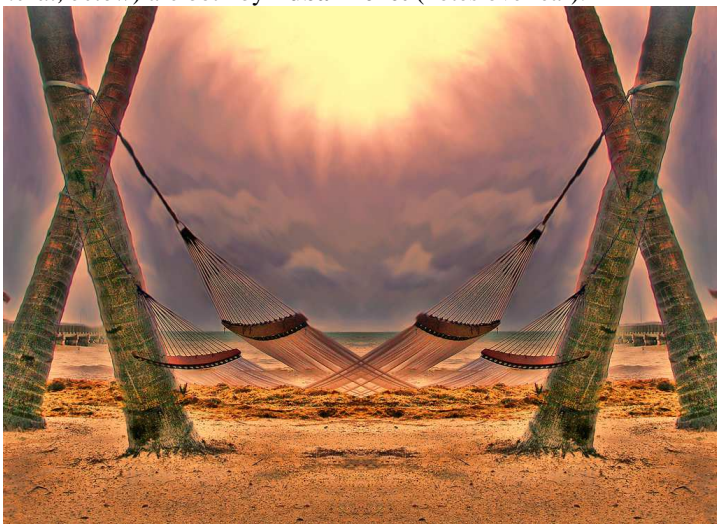
### April Projected Competition Winners



**Yin and Yang** (2<sup>nd</sup> place Assigned, above) and **Crisscross** (2<sup>nd</sup> place General, below) are both by **Luba Ricket** (notes overleaf).



**Aavo Merend** bagged 1<sup>st</sup> place Assigned, for **The Lonely Sentinel**, photographed in Ecola State Park, OR, around noon on a cloudy day with a Canon 30D and EF-S 17-85 mm. lens @ f/9, 1/125 sec. ISO: 200. The sky was modified in Photoshop. Colors were adjusted using Topaz Adjust. Ecola State Park is an exceptionally fine location for capturing shore scenery and for nature photography in general. Highly recommended!



**Tranquility** (1<sup>st</sup> place General, above) is by **Linda Wroble**; **Hildene** (3<sup>rd</sup> place Assigned, at left) is by **Robert Coppola**.





### February Print Competition Results

Assigned Topic: <i>Giant</i>		
1	Luba Ricket	Big and Burly
2	Ken Deitcher	Mega Photo Shoot
3	Barb Lawton	Hi There Big Guy
HM	Sharon Shoenberg	You Get the Point
HM	Linda Wroble	Sanibel Light House
HM	Linda Wroble	Adirondack Blast Furnace
General		
1	Phil Hammond	Barn Window
2	Jack Hurley	Abandoned
3	Jim Miller	St. Patrick Cathedral
4	Soumita Sarkar	Cayuga State park
HM	Kim Koza	Trio of Leaves
HM	Steve Shoenberg	In the Eye of the Beholder
HM	Phil Hammond	Boy Haven Pool
HM	Fritz Roth	On Parade
Monochrome		
1	Rebekah Sokol	Abstraction and Vapor Trail
2	Max Tiller	Frontier Scout
3	Kim Koza	More Laundry
HM	Steve Shoenberg	The Other Side of Parliment
HM	Dan Steen	Bark "Europa" Circa 2011
HM	Jim Miller	Rosary

**Crisscross** (2<sup>nd</sup> place General projected image, overleaf) was photographed in Key West, FL, by **Luba Ricket** with a Olympus C7000Z P&S camera @ f/4, 1/125 sec. ISO: 80. Luba flipped the original image onto itself, then used different Topaz filters (sunset was one). The sky became grainy, so she used the smudge tool smooth out the grain. **Yin and Yang** (2<sup>nd</sup> place Assigned projected image, overleaf) by **Luba Ricket** is an iPhone4 image, shot @ f/2.8, 1/3200 sec. ISO: 80 on Islamorada, in the Florida Keys, in beautiful natural light. This is another flip, using different Topaz filters, which ended up with a smooth painterly look. Luba cloned out the rock on the right side of the final flip.

### February Projected Competition Results

Assigned Topic: <i>Portrait of a tree</i>		
1	Aavo Merend	The Lonely Sentinel
2	Luba Ricket	Yin and Yang
3	Robert Coppola	Hildene
4	Luba Ricket	Zen Tree
5	Allison Fuschino	I Stand Alone
HM	Cynthia Placek	Florida's Baobab Tree
HM	Dave Bennett	Happy Tree
HM	Dick Mendelson	Root for Me
HM	Kim Koza	Lonely Tree
HM	Ron Ginsburg	Windswept Tree
General		
1	Linda Wroble	Tranquility
2	Luba Ricket	Crisscross
3	Drue Sokol	Intensity
4	Max Tiller	The Happy Couple
5	John Berninger	Statues at the Met
HM	Bob Gough	Michael
HM	Bob Gough	Under the Boardwalk
HM	John Berninger	Waskosims Leaf
HM	Kim Koza	Past Their Prime
HM	Rebekah Sokol	Archway



**Intensity** (3<sup>rd</sup> place General projected image, at bottom) by **Drue Sokol** was photographed with a Canon 20 DSLR in a Dance Studio one evening.

**Assigned topics for 2012-2013**

<b>Print Competition</b>		
Oct	<i>All Hands On Deck</i>	Show us your images of <b>HANDS</b>
Nov	<i>Smile for the Camera</i>	Show us those <b>SMILES</b> in creative and unique way
Dec	<i>Bicycles, Bicycles, Bicycles</i>	'nuff said? Make those <b>BICYCLE</b> wheels spin
Jan	<i>It's All About the Motion</i>	Put that subject in <b>MOTION</b>
Feb	<i>It's a Dog Eat Dog World</i>	Take some unique shots of <b>DOGS</b>
Mar	<i>If You Think That Was Funny, Look at This</i>	<b>HUMOR</b> in photography, can you make us chuckle?
Apr	<i>Let's Eat</i>	<b>FOOD</b> is the way to a photographer's soul
<b>Projected Competition</b>		
Oct	Portals	Through which we pass.
Nov	Pears	Have fun photographing this favorite fruit. Can be one or a more.
Dec	Rule of Odds	Simplest way to make a composition dynamic, have an odd number of subjects.
Jan	Time	Your interpretation.
Feb	Negative Space	Add more focus & attention to your subject. Main subject should be less than 50% of the frame.
Mar	High Key	Typically dominated by the color white, images have deliberate overexposed areas either in the subject or background.
Apr	Diptych or Triptych	Combination of 2 (or 3) images placed next to each other (can be in contact with each other or separated by a border) to make an artistic statement or comparison.

Schenectady Photographic Society's meetings are held at the First United Methodist Church at 603 State St. in Schenectady, NY. Parking and entrance are at the rear of the building off Chapel St., a short one-way street off Nott Terrace. Additional information and directions on our website <http://www.schenectadyphotographicsociety.com/>

[Like SPS on Facebook](#)



FOUNDED 1931

**2011-2012 Board of Directors****President**

Frank Bumbardatore A2EEOS@aol.com

**Vice President**

Kim Koza kkoza@silhouetteimages.com

**Treasurer**

Pat McCormick suemcc\_2000@yahoo.com

**Recording Secretary**

Dale Winsor dalehope8@yahoo.com

**Corresponding Secretary**

Bob Riccardo 767-2193

**Directors at Large**

Ray Henrikson rhenriks@nycap.rr.com

Connie Frisbee Houde globalphotographer@me.com

**Judging Coordinator**

Jeff Altman drjsax@aol.com

**Newsletter Editor**

N. Sukumar sukumarfineartphoto@gmail.com

**Web Master**

Bob Gough rcgough@gmail.com

**Annual Report Editor**

Ruby Gold rubygold@verizon.net

**Print Co-Chairs**

Sean Sullivan sps@spsphotography.com

Doug Mitchell dougmitchellphotos@nycap.rr.com

**Assistants**

Adrian Kivort 399-2950

Bob Warner 377-3831

**Projected Imaging Co-Chairs**

Luba Ricket Lubashot@aol.com

**Assistant**

Bob Gough rcgough@gmail.com

**PhotoEssay Co-Chairs**

Connie Frisbee Houde globalphotographer@me.com

Jim Craner renarc@aol.com

**Mentoring Co-Chairs**

Robert Near rjnear@rjnphoto.com

Jeff Perkins perkster46@yahoo.com

**Fine Arts Chair**

N. Sukumar sukumarfineartphoto@gmail.com

**Membership Co-Chairs**

Luba Ricket lubashot@aol.com

Cynthia Placek cynthiplacek@gmail.com

**Publicity**

Cynthia Placek cynthiplacek@gmail.com

**Grab Bag Coordinator**

Sean Sullivan sps@spsphotography.com

**Refreshment Coordinators**

Judy Breslau jbreslau@courts.state.ny.us

John Ogden jogden@capital.net

**Inter-Club Coordinator**

N. Sukumar sukumarfineartphoto@gmail.com

**Traveling Exhibit Coordinator**

Ray Henrikson rhenriks@rycap.rr.com

© Schenectady Photographic Society and its contributors. The contents of the newsletter are copyrighted. No material herein may be reproduced in any manner without the written permission of the Editor or the material's specific contributor. The Focus is published ten times a year by the Schenectady Photographic Society. The organization meets each Wednesday at 7:30 p.m. from October through May to promote and present informative programs, activities and competitions in the photographic arts for photographers throughout the Capital District. Members range from novice to expert. Annual dues are \$40.00 for individuals and families. The Focus newsletter is included in the membership dues. SPS meets at the First United Methodist Church, 603 State Street, Schenectady, New York. Parking and entrances are on Chapel Street, a one way street off Nott Terrace. Guests are welcome at all regular meetings. **If you change your email or mailing address, let Bob Riccardo know at [briccardo@verizon.net](mailto:briccardo@verizon.net)**



# LINDSAY ADLER

**RENOWNED FASHION PHOTOGRAPHER**

Presented by the Schenectady Photographic Society

**FRIDAY, SEPT. 21, 2012**

**7PM VAN CURLER ROOM AT SCCC** free admission

**MORE INFO** Kim Koza 810-6200

[www.schenectadyphotographicsociety.com](http://www.schenectadyphotographicsociety.com)

**BE SURE TO ASK ABOUT THE DAY-LONG  
WORKSHOP WITH LINDSAY ON SEPT. 22  
HURRY - SPACES ARE LIMITED!**

**SPONSORED BY:**

**SIGMA** 